

# **TV Expert User Manual**

P/N:874-00101

## Unique:

### (1) Friendly Scan function

TV Expert could be easily defined as a TV player, no matter digital TV signal or analog TV signal. Avoid unfriendly setting, just plug in cable and scan, you get everything on cable!

### (2) Powerful channel manager

- Individual channel setting(Video/Audio format)
- Channel rename/resorting
- Favorite channel setting

TV Expert allows you manage what you get from TV cable. For example, you can put PAL TV in List 1~20, SECAM TV in List 21~25, DVB-t TV in List 26~40 or what else you wish.

### (3) User self-define volume of different sources.

This function prevents the suddenly high-volume voice while switching different sources. Protect your ear and Speaker.

### (4) Flexible Remote controller setting

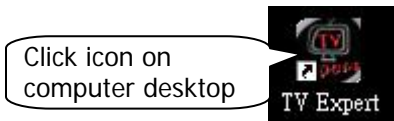
TV Expert supports 3 sets Remote controller. Each remote controller can redefine every button.

# System Requirement

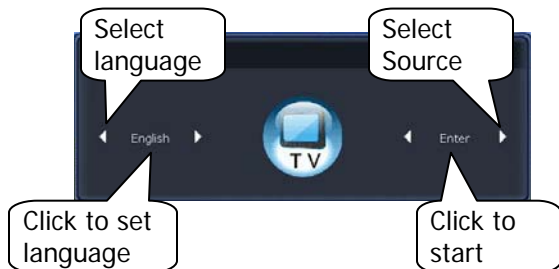
- (1) Pentium 4 2.4 GHz / Centrino 1.6 GHz or faster
- (2) 512 MB or more system memory
- (3) 20 MB disk space for installation
- (4) DirectX 9.0 compatible video card
- (5) Windows XP with SP2 / Windows Vista

# Operate TV Expert

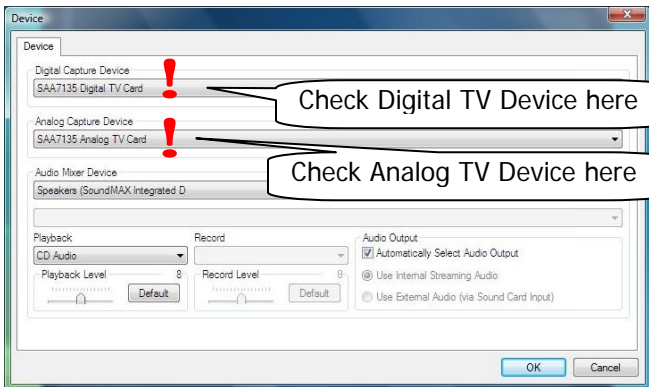
## 1. Start TV Expert



## 2. An User interface will show up



### 3. First Start – Check device



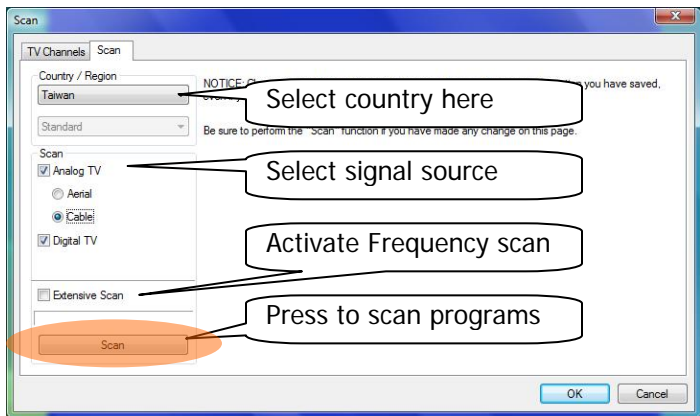
Press Ok for next step.

### TV Expert support List

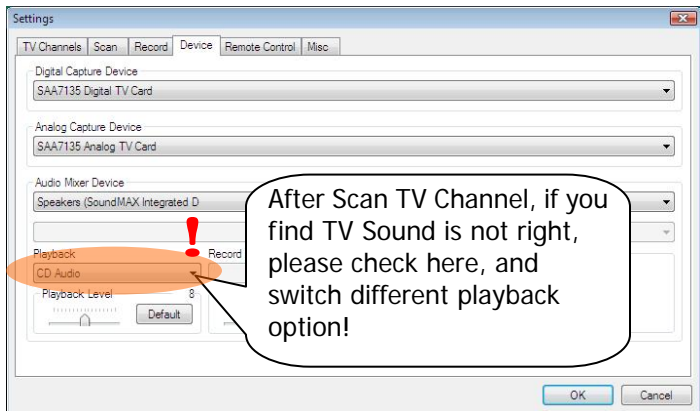
<b>Digital</b> Capture Device	<b>Analog</b> Capture Device
SAA7135 Digital TV Card	SAA7135 Analog TV card
SAA7134 Digital TV Card	SAA7134 Analog TV card
SAA7133 Digital TV Card	SAA7133 Analog TV card
SAA7131 Digital TV Card	SAA7131 Analog TV card
TM6000 Digital TV	TM6000 Analog TV
DiB7700 Digital TV	DiB7700 Analog TV
CX23885 Digital TV	CX23885 Analog TV
	SAA7130 Analog TV card
	Bt878 TV Card
	TM5600 Analog TV

Remark: TV Expert does not support 2 TV Cards in the same time. So that please do not set such as SAA7135 Digital TV Card with TM5600 Analog TV together.

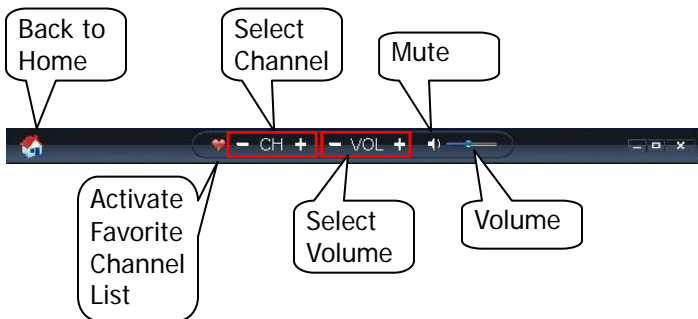
# Scan Channel



Press Ok for after scan finish and watching TV Program.



## 4. Function User Interface (TV)



## 4-1 TV Control on the User Interface

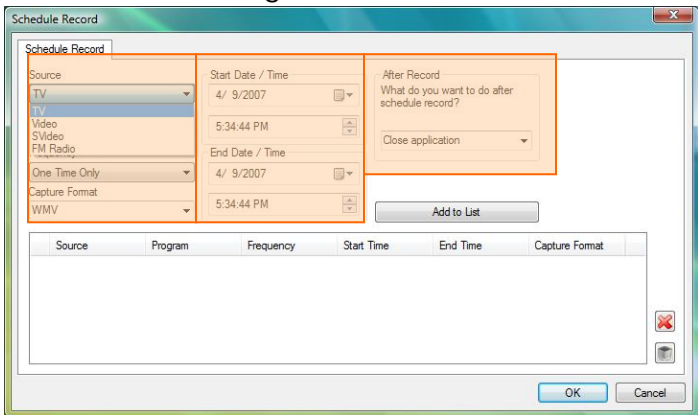


### Function Menu





# Schedule Recording



Source

TV

Select Source

Source

TV  
Video  
SVideo  
FM Radio

Channel

4

Select Channel

Frequency

One Time Only

"One Time only"  
or "Weekly"

One Time Only

Capture Format

WMV

Capture Format

WMV

Select Record Format  
Basic Format is WMV  
\*\* More formats depend on  
the Codec in your PC.  
EX: MPEG1/2/4

Choose signal  
source from here

- TV
- Video
- S Video
- FM Radio

Start Date / Time

4/ 9/2007

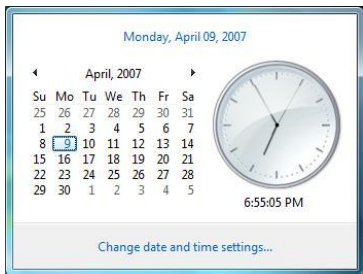
5:40:44 PM

---

End Date / Time

4/ 9/2007

6:40:44 PM



After Record

What do you want to do after schedule record?

- 
- 
- 
- 
- 

Determine your PC Status after schedule record.

Schedule Record

Source: TV

Channel: 4

Frequency: One Time Only

Capture Format: WMV

Start Date / Time: 4/ 9/2007 5:40:44 PM

End Date / Time: 4/ 9/2007 6:40:44 PM

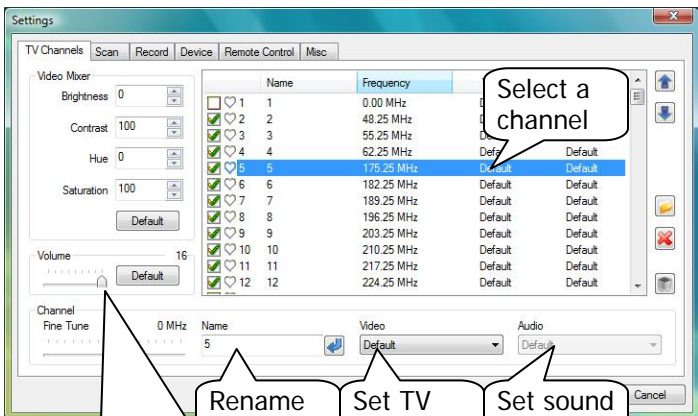
Source	Program	Frequency	Start Time	End Time	Capture Format
1 TV	4	One Time Only	2007/04/09 17:40	2007/04/09 18:40	WMV

After Setup Click here "Add to List" to add schedule.

Press "OK" and leave, TV Expert will wake up and record what you need!

Please Keep PC **Power on** or **Sleep Mode** while Schedule Recording.

# Settings TV Channel



Rename  
channel

Set TV  
system

Set sound  
standard

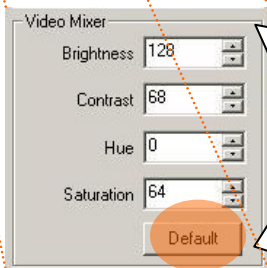
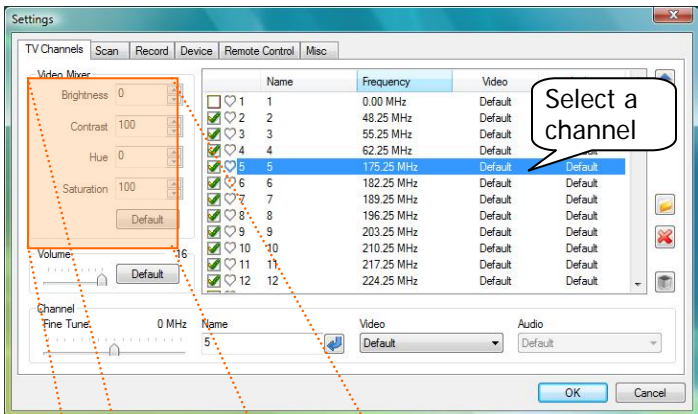
TV Volume Setting:

By this setting, you can balance  
the default volume with other  
signal source:

Video / S-Video/ FM Radio

## Set Picture quality:

By this video mixer, you can fine tune TV picture quality.



Here you can fine tune your Video.

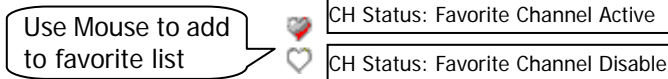
Press "Default" to recover factory setting

## Set active/disable and favorite channel

	Name	Frequency	Video	Audio
<input type="checkbox"/>	1	0.00 MHz	Default	Default
<input checked="" type="checkbox"/>	2	48.25 MHz	Default	Default
<input checked="" type="checkbox"/>	3	55.25 MHz	Default	Default
<input checked="" type="checkbox"/>	4	62.25 MHz	Default	Default
<input checked="" type="checkbox"/>	5	175.25 MHz	Default	Default
<input checked="" type="checkbox"/>	6	182.25 MHz	Default	Default
<input checked="" type="checkbox"/>	7	189.25 MHz	Default	Default
<input checked="" type="checkbox"/>	8	196.25 MHz	Default	Default
<input checked="" type="checkbox"/>	9	203.25 MHz	Default	Default
<input checked="" type="checkbox"/>	10	210.25 MHz	Default	Default
<input checked="" type="checkbox"/>	11	217.25 MHz	Default	Default
<input checked="" type="checkbox"/>	12	224.25 MHz	Default	Default



!! Disabled Channel could not be selected by button CH +/- and remote controller



Click here to activate Favorite List. The button CH +/- and Remote Controller can only switch between favorite channels.

# Channel manager

	Name	Frequency	Video	Audio
✓♥	33	277.25 MHz	Default	Default
✓♥	34	283.25 MHz	Default	Default
✓♥	35	289.25 MHz	Default	Default
✓♥	36	295.25 MHz	Default	Default
✓♥	37	301.25 MHz	Default	Default
✓♥	38	307.25 MHz	Default	Default
✓♥	39	313.25 MHz	Default	Default
✓♥	40	319.25 MHz	Default	Default
✓♥	41	325.25 MHz	Default	Default
✓♥	42	331.25 MHz	Default	Default
✓♥	43	337.25 MHz	Default	Default
✓♥	44	343.25 MHz	Default	Default
✓♥	45	349.25 MHz	Default	Default
✓♥	46	355.25 MHz	Default	Default

Select and Edit a channel

Name	Video	Audio
33	Default	Default

Rename channel

Set TV system

Set sound standard

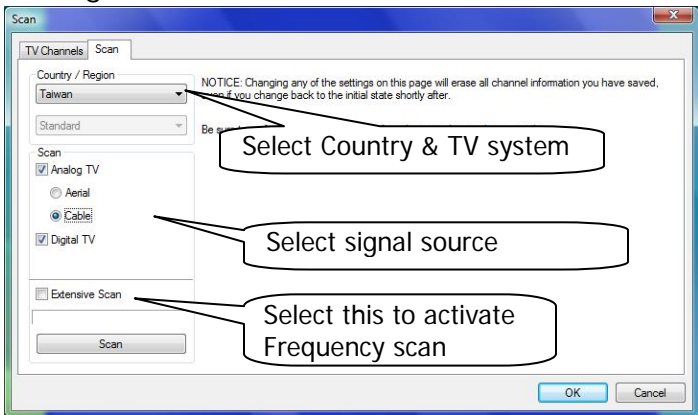
Use Move to resort channel list

	Name	Frequency	Video	Audio
✓♥	33	277.25 MHz	Default	Default
✓♥	34	283.25 MHz	Default	Default
✓♥	35	289.25 MHz	SECAM L/L'	Default
✓♥	36	295.25 MHz	SECAM L/L'	Default
✓♥	37	301.25 MHz	SECAM L/L'	Default
✓♥	38	307.25 MHz	Default	Default
✓♥	39	313.25 MHz	PAL B/G	Default
✓♥	40	319.25 MHz	PAL B/G	Default
✓♥	41	325.25 MHz	Default	Default
✓♥	42	331.25 MHz	Default	Default

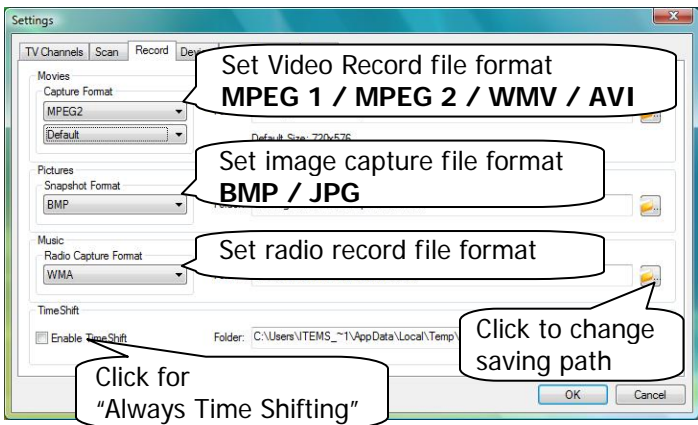
**You can manage your Channel List. !!**

For example, put France TV and German TV in a same channel List.

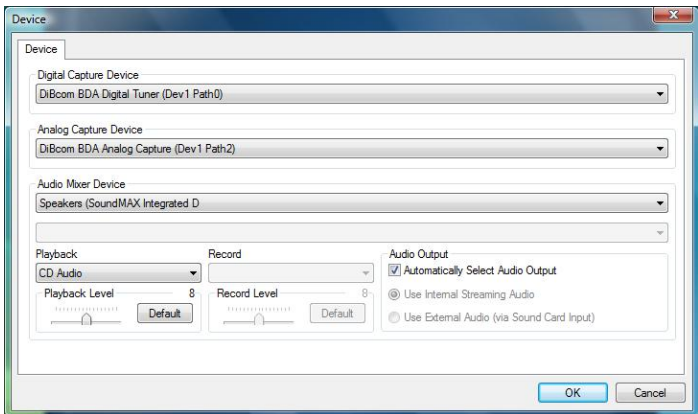
## Settings Scan



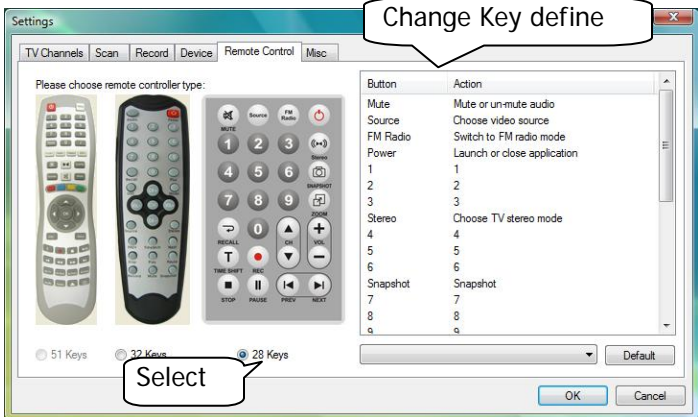
## Settings Record



## Settings Device

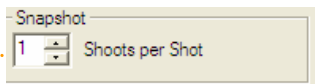
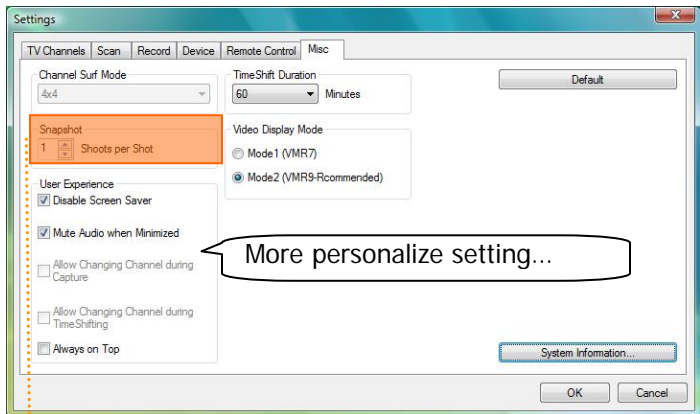


## Settings Remote Controller





# Settings Misc



Allow more then 1 image per snapshot